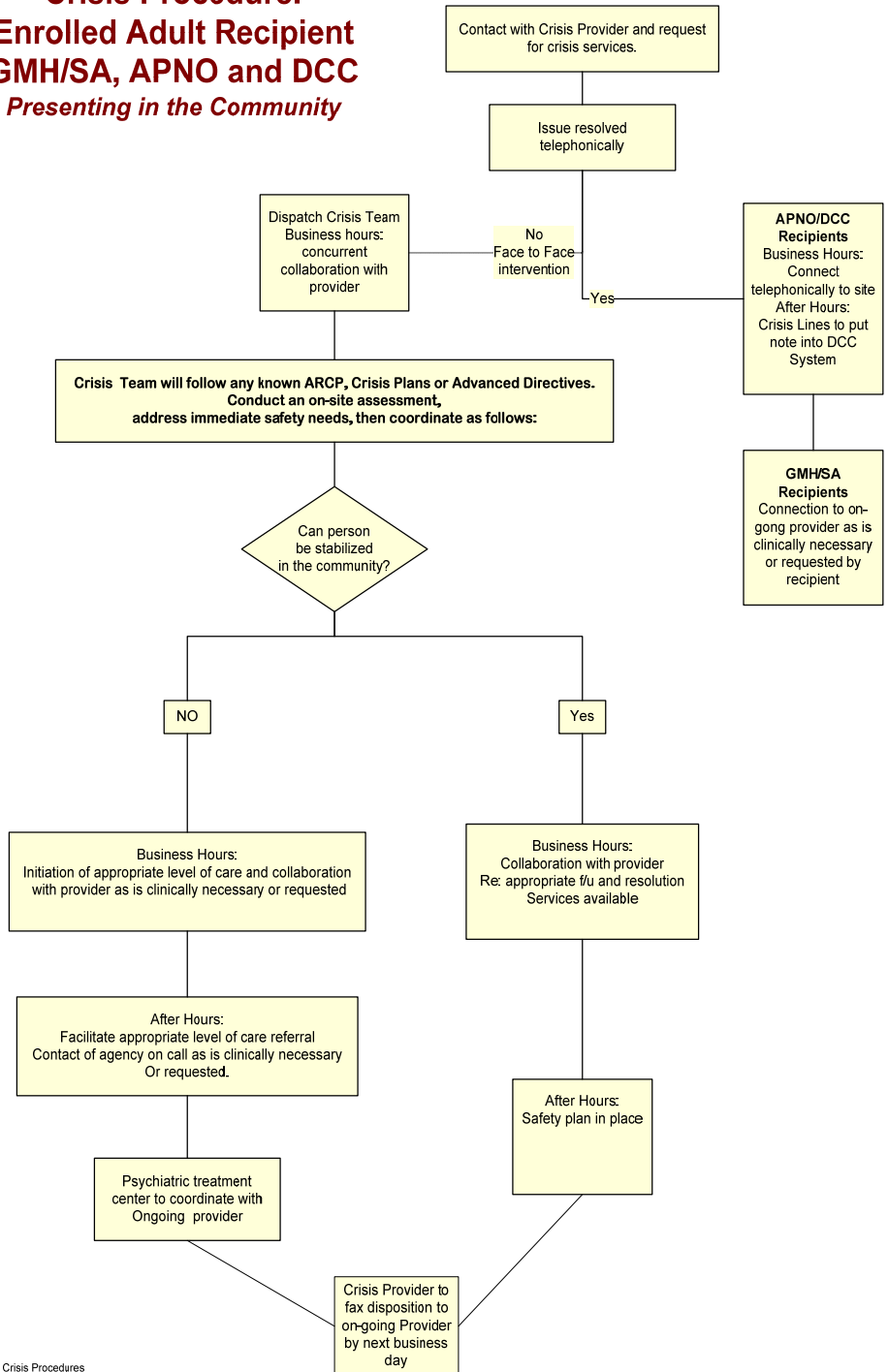
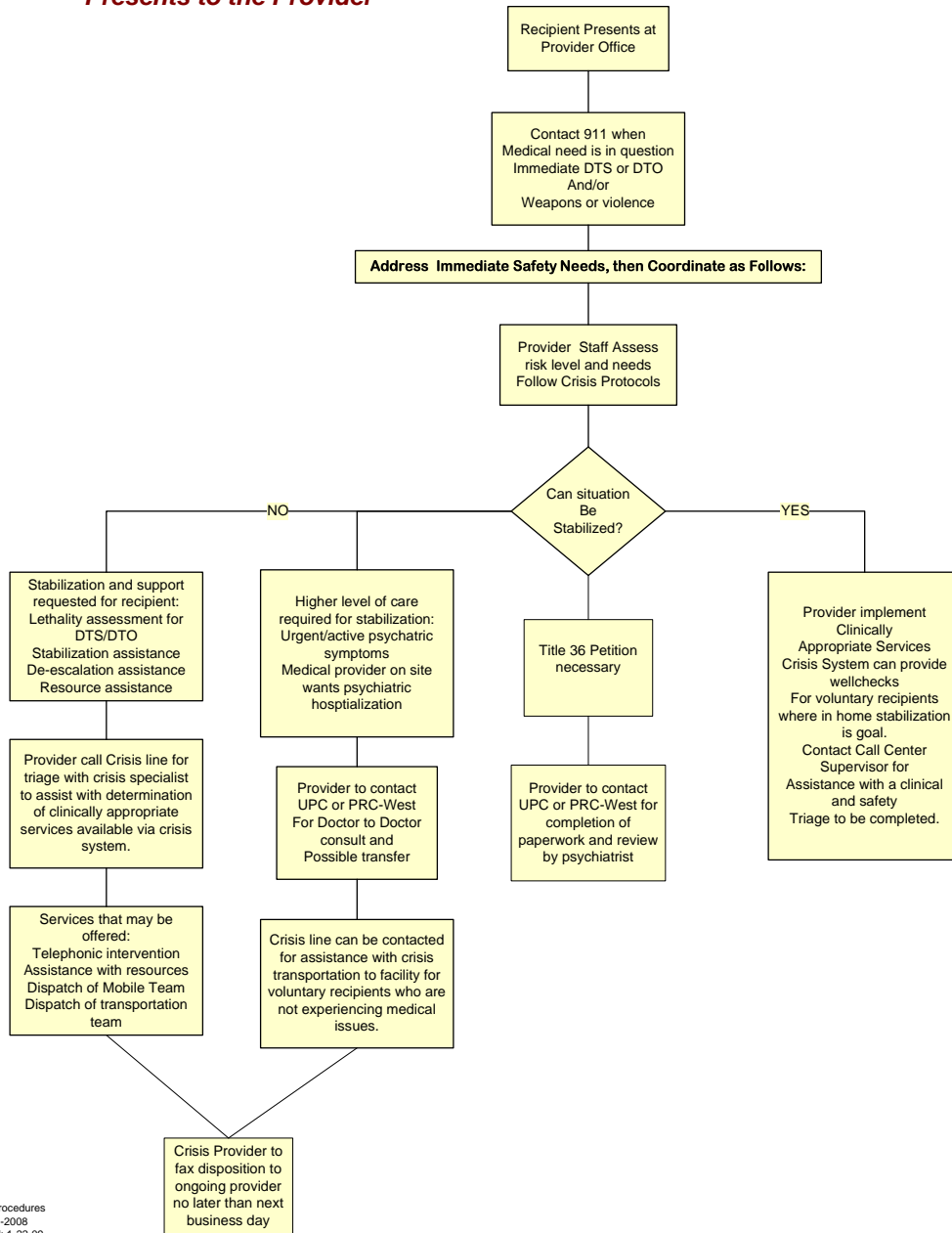


**Crisis Procedure:
Enrolled Adult Recipient
GMH/SA, APNO and DCC
Presenting in the Community**



Crisis Procedures
5-30-2008
Updated: 12-1-08, 1-22-09, 2-12-09

**Crisis Procedure:
Enrolled Adult Recipient
GMH/SA, APNo and DCC
Presents to the Provider**



Crisis Procedures
12-1-2008
Updated: 1-22-09,
2-12-09